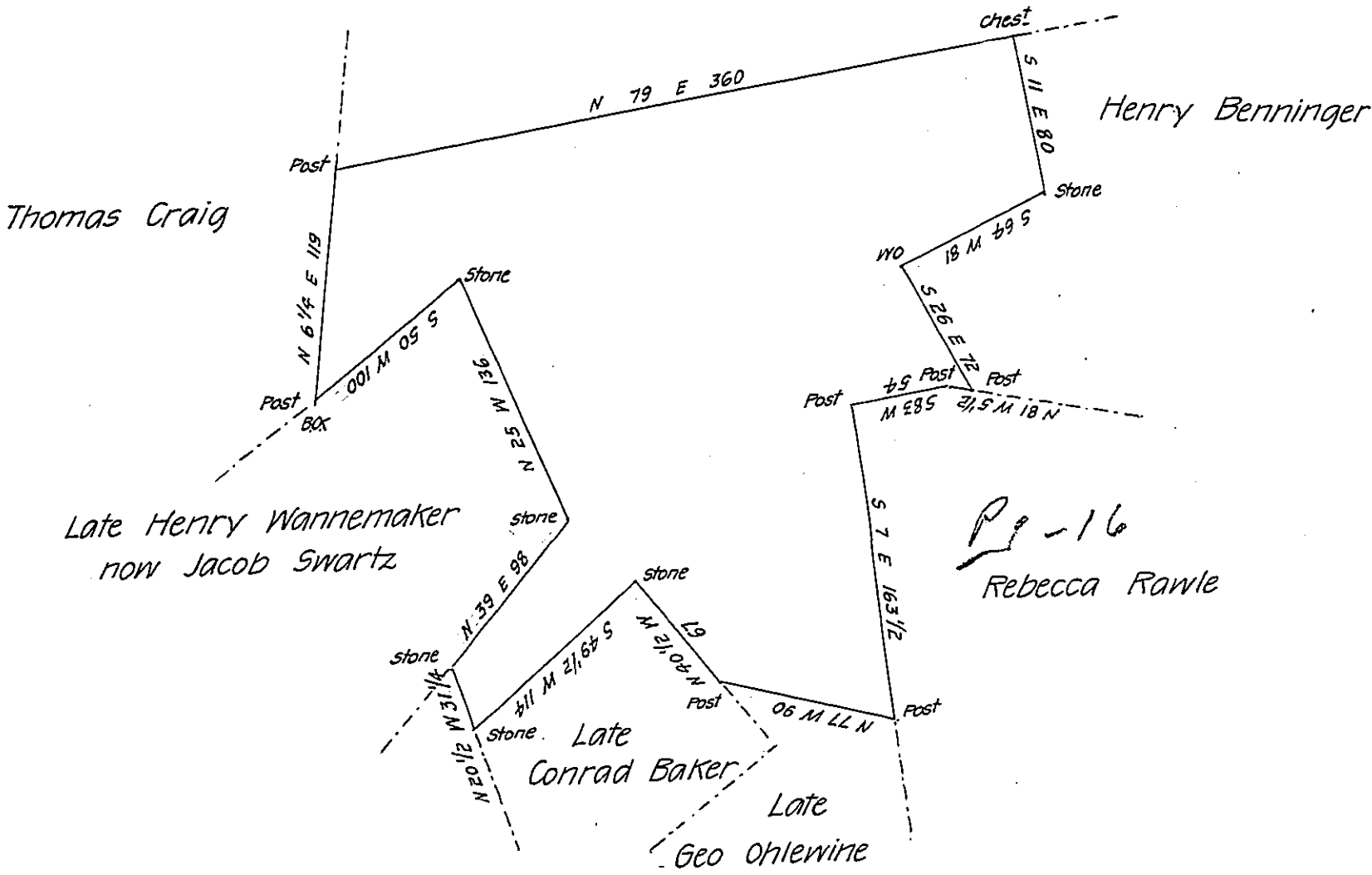


Thomas Craig



Pg-16  
Rebecca Rawle

By virtue of a warrant dated the 24<sup>th</sup> May 1794 Surveyed  
 the 20 July 1794 to Sarah Rawle the above described tract of  
 land situate in Towamensing Township Northampton County Contain-  
 ing four hundred and twenty five acres sixty five perches and  
 the allowance of Six P. Cent &c<sup>a</sup>

P-Geo. Palmer D. S.

To Daniel Brodhead Esquire  
 Surveyor General.

IN TESTIMONY that the above is a copy of the original remaining on file in  
 the Department of Internal Affairs of Pennsylvania, made  
 conformably to an Act of Assembly approved the 16th day of  
 February, 1833, I have hereunto set my Hand and caused  
 the Seal of said Department to be affixed at Harrisburg,  
 this tenth day of October 1906.

*Geo. R. Palmer*  
 Secretary of Internal Affairs.